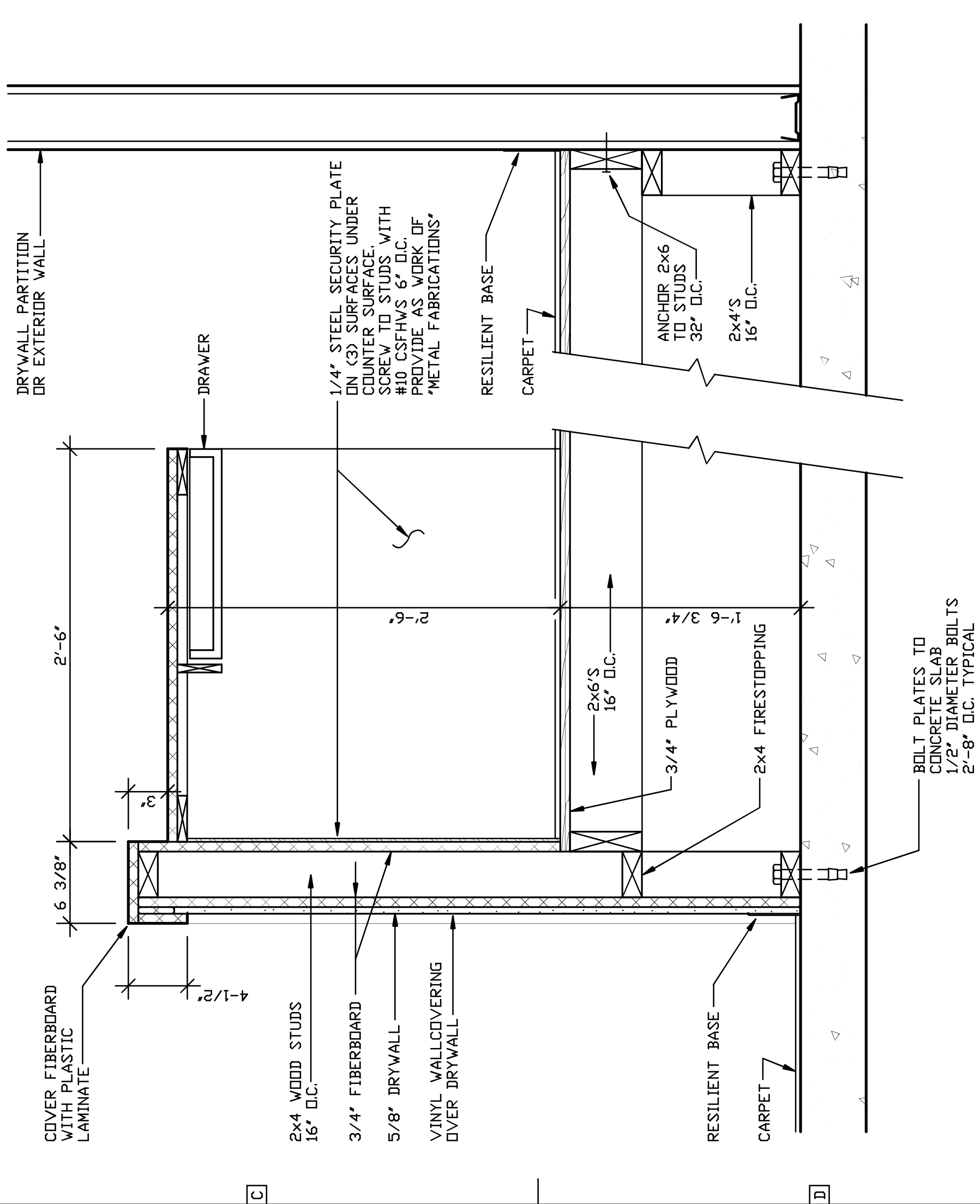
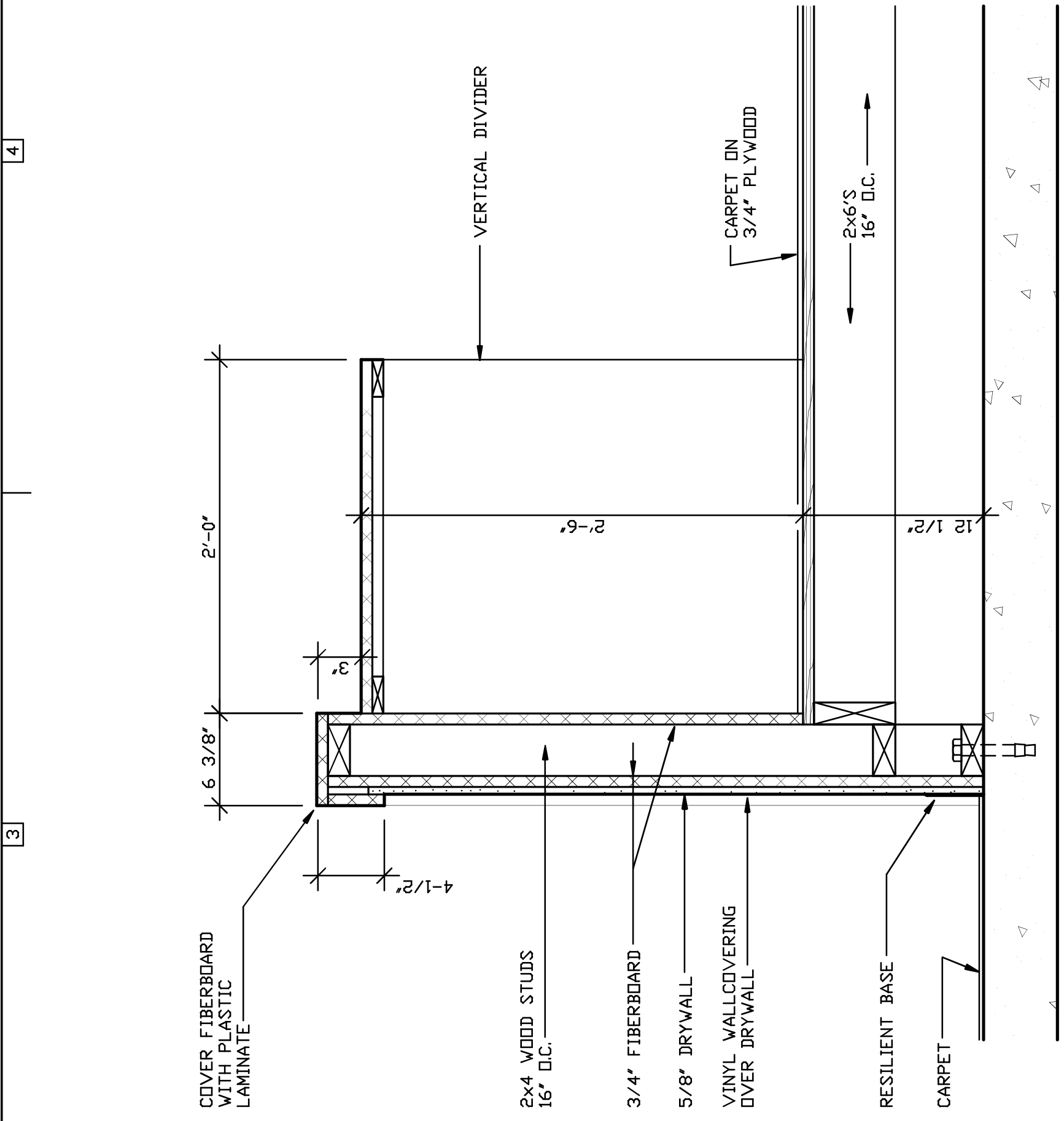


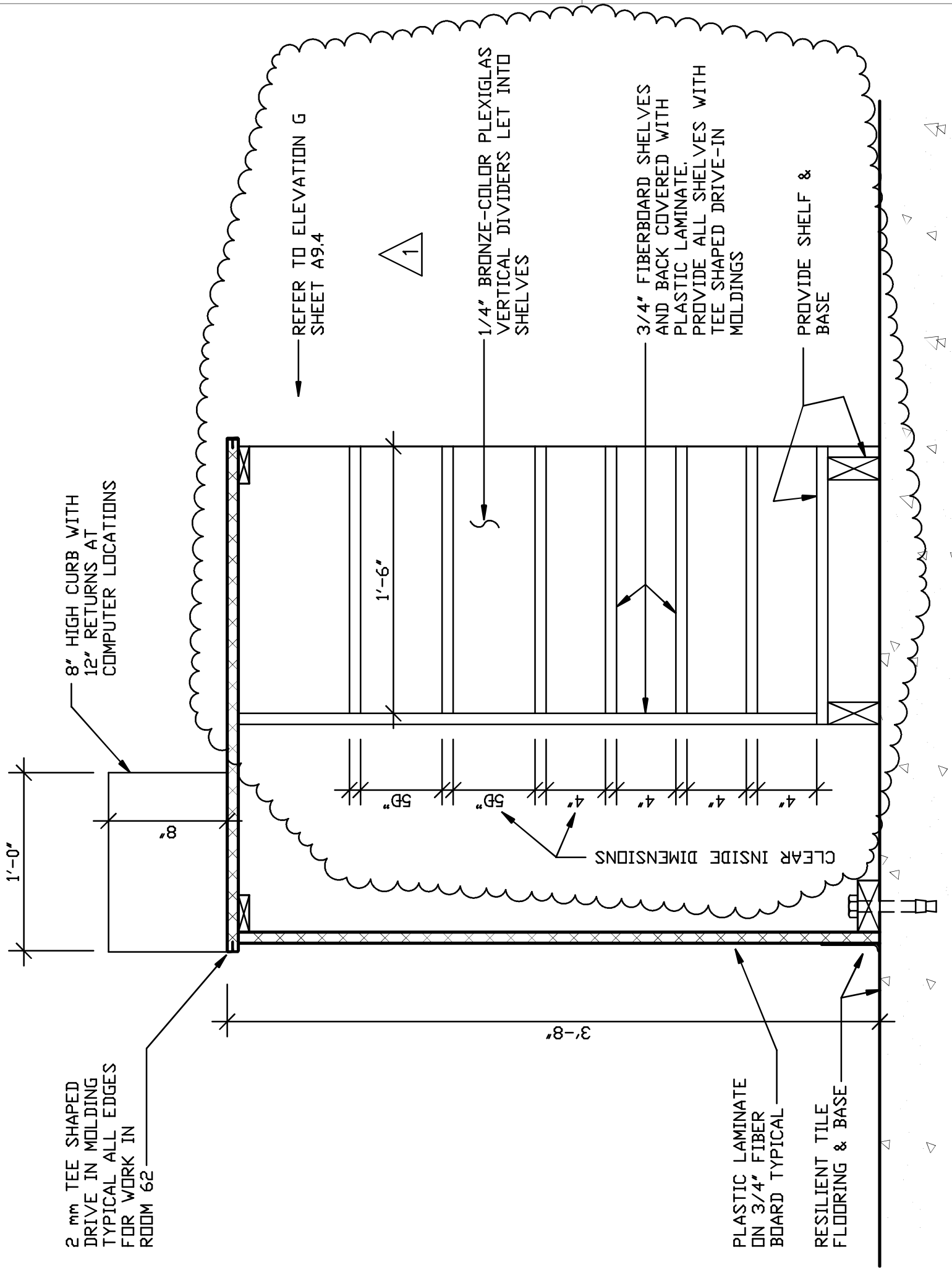
B1 ENLARGED JUDGE'S BENCH PLAN
A93 1/2" = 1'-0"



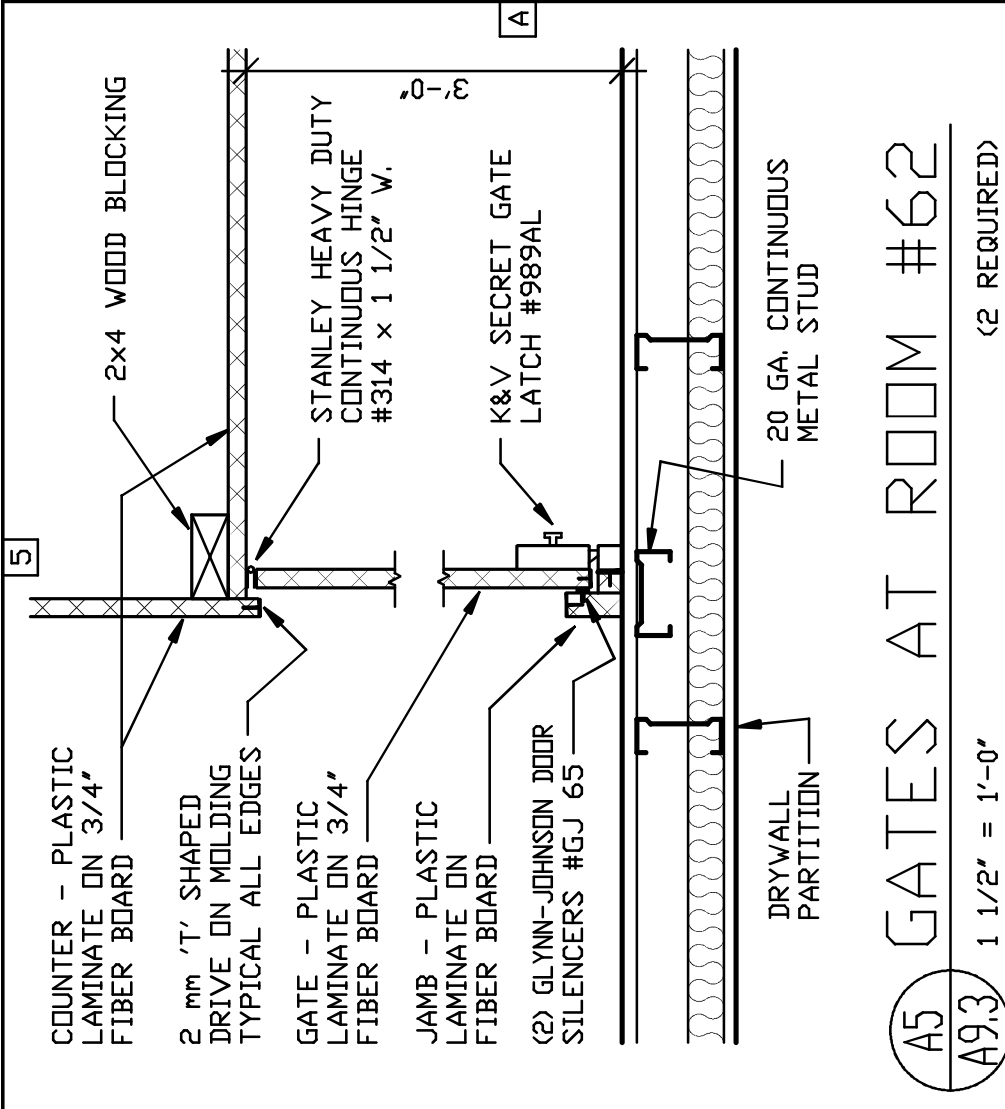
D1 SECTION THRU JUDGE'S BENCH
A93 1 1/2" = 1'-0"



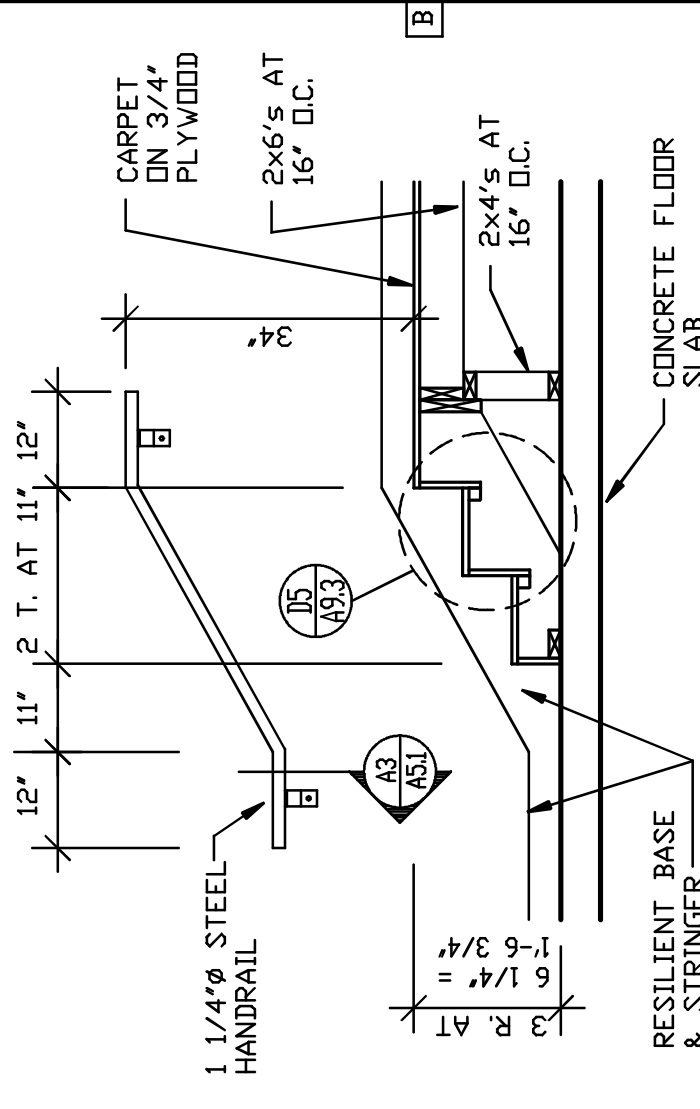
B3 SECTION THRU COURT RECORDERS DESK
A93 1/2" = 1'-0"



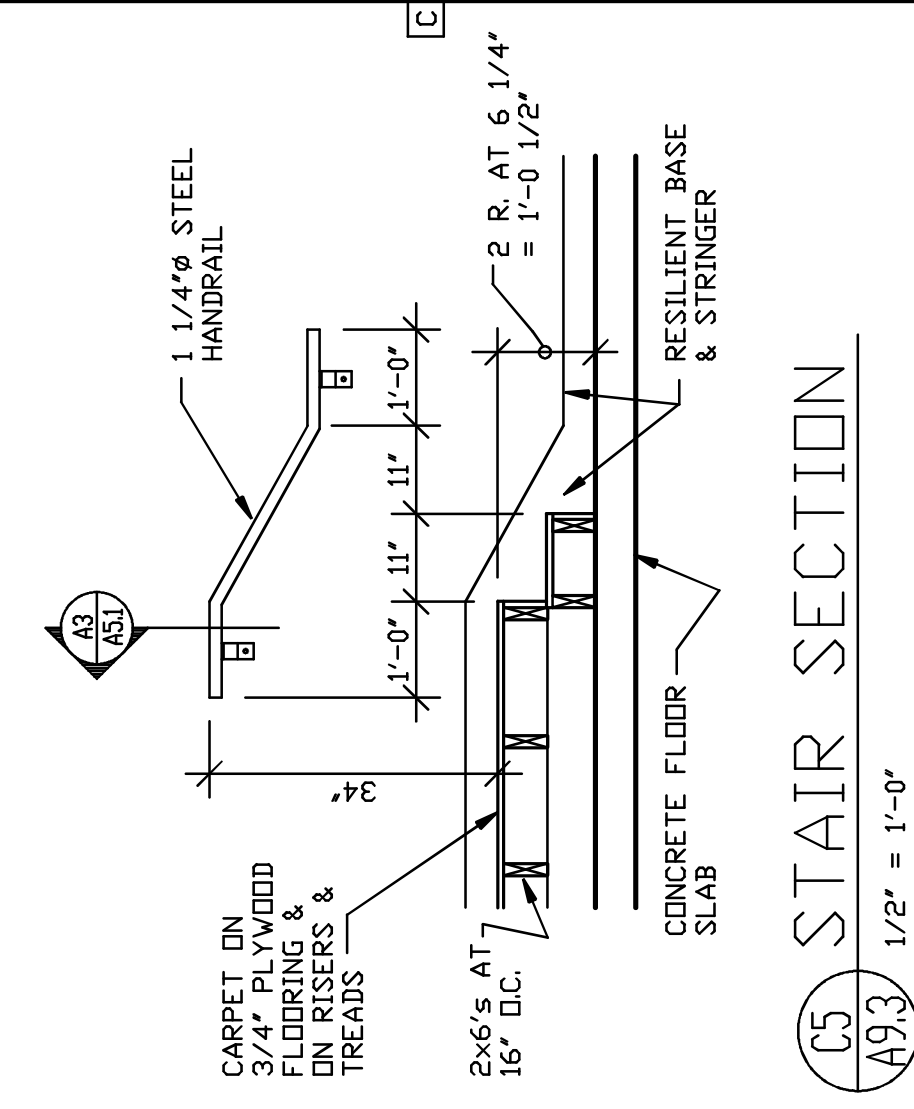
D3 COUNTER AT ROOM #62
A93 1 1/2" = 1'-0"



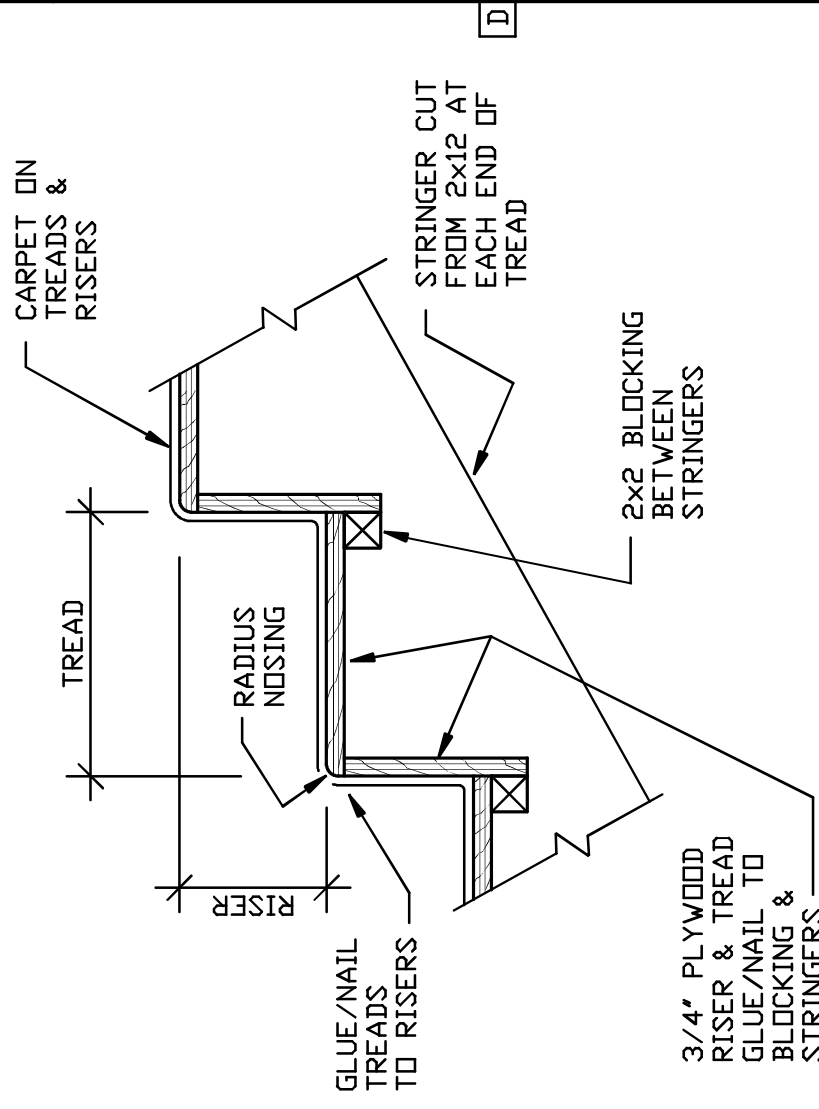
A5 GATES AT ROOM #62
A93 1 1/2" = 1'-0"



B5 STAIR SECTION
A93 1/2" = 1'-0"



C5 STAIR SECTION
A93 1/2" = 1'-0"



D5 TREAD DETAIL
A93 1 1/2" = 1'-0"

GENERAL NOTES

- ALL FRAMING LUMBER AND PLYWOOD SHOWN THIS SHEET SHALL BE FIRE-RETARDANT TREATED.
 - UNLESS OTHERWISE INDICATED, CABINET UNITS SHALL BE 1/2" FIBERBOARD COVERED WITH PLASTIC LAMINATE.
 - PROVIDE K&V #1320 DRAWER SLIDES FOR DRAWER AT JUDGES BENCH.
 - PROVIDE STANLEY #4484 ALUMINUM DRAWER PULL FOR DRAWER AT JUDGE'S BENCH.
 - PROVIDE WIRE ACCESS HOLES, 1-1/4" DIAMETER IN COUNTER SURFACES. PROVIDE EACH WITH SNAP-IN PLASTIC COVER. PROVIDE AS FOLLOWS:
 - (2) IN EACH JUDGE'S BENCH
 - (2) IN EACH WITNESS STAND.
 - (2) IN COUNTER, ROOM #62.
- EXACT LOCATION OF ACCESS HOLES WILL BE DETERMINED BY OWNER.

REVISION **1** OCT. 23, 1991