

GENERAL NOTES

WHERE GLAZED TILE WAINSCOTS AND WALL FINISH OCCURS AT INTERIOR PARTITIONS, STEEL STUDS SHALL BE A MINIMUM OF 20-GAGE (0.0329").

DOUBLED 20-GAGE STEEL STUDS ARE REQUIRED AT DOOR JAMBS. ELSEWHERE DRYWALL PARTITION STEEL STUDS SHALL TYPICALLY BE A MINIMUM OF 25-GAGE (0.0179").

WHERE VERTICAL REINFORCING BARS ARE INDICATED TO BE GROUTED INTO CORES OF CMU, LIMIT GROUT LIFT TO 4'-0" MAXIMUM. PROVIDE MINIMUM 24" BAR LAPS.

FIT DRYWALL PARTITIONS CLOSELY AND ACCURATELY AROUND BEAMS AND JOISTS. FILL ANY VOIDS WITH SAFING INSULATION. MAINTAIN INTEGRITY OF FIRE-RATINGS AND ACOUSTICAL SEPARATIONS.

WHERE DRYWALL PARTITIONS ARE UNABLE TO EXTEND TO ROOF DECK DUE TO INTERFERENCE WITH STEEL JOISTS PARALLEL TO PARTITIONS, TERMINATE PARTITIONS AT BOTTOM OF STEEL JOISTS; PROVIDE DEEP LEG TRACK. COVER BOTH SIDES OF JOISTS WITH 5/8" DRYWALL ON HAT-SHAPED FURRING CHANNELS SPACED 16" O.C. MAINTAIN ACOUSTICAL SEPARATION BETWEEN ROOMS. SEE DETAIL BELOW.

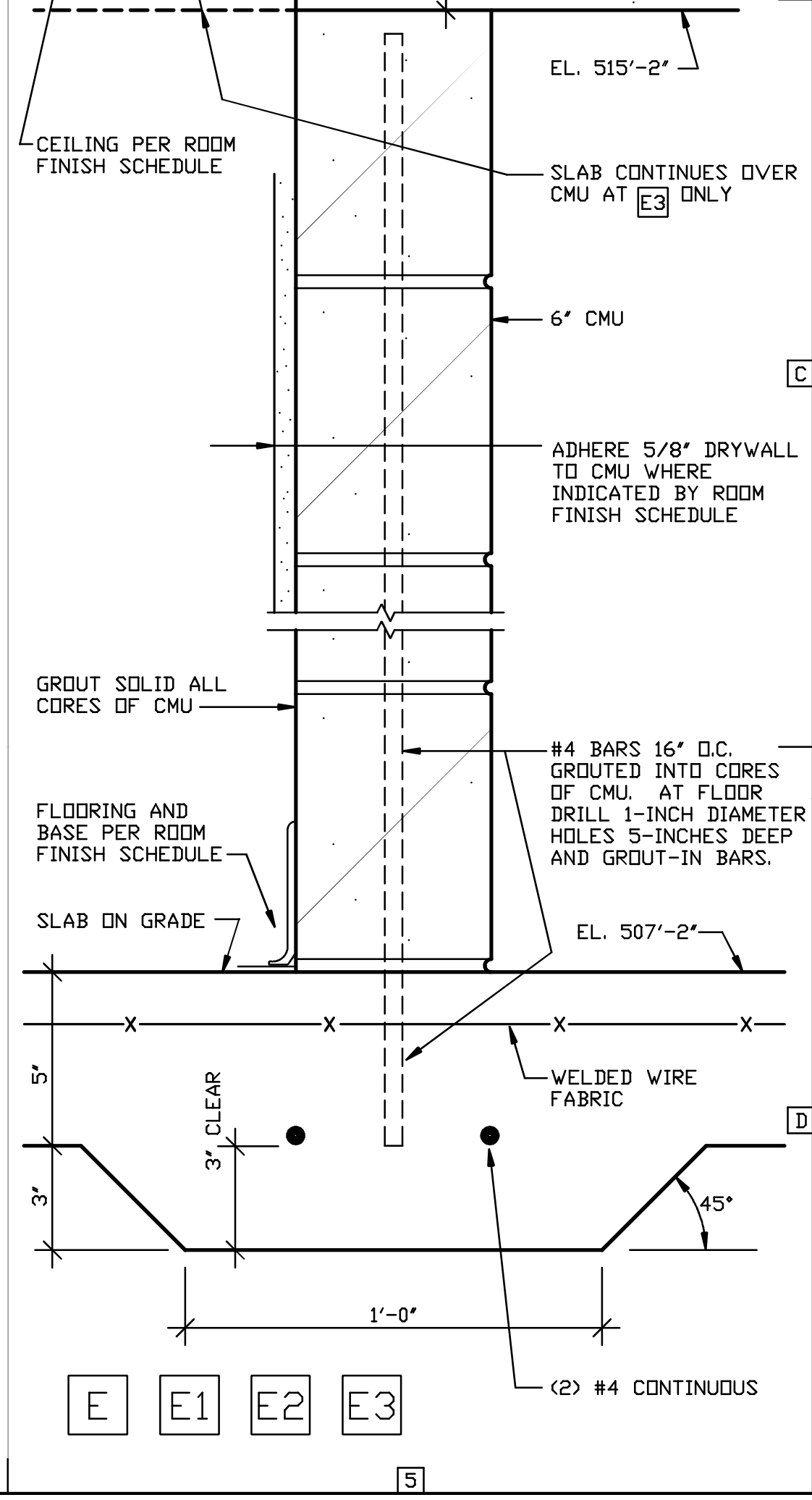
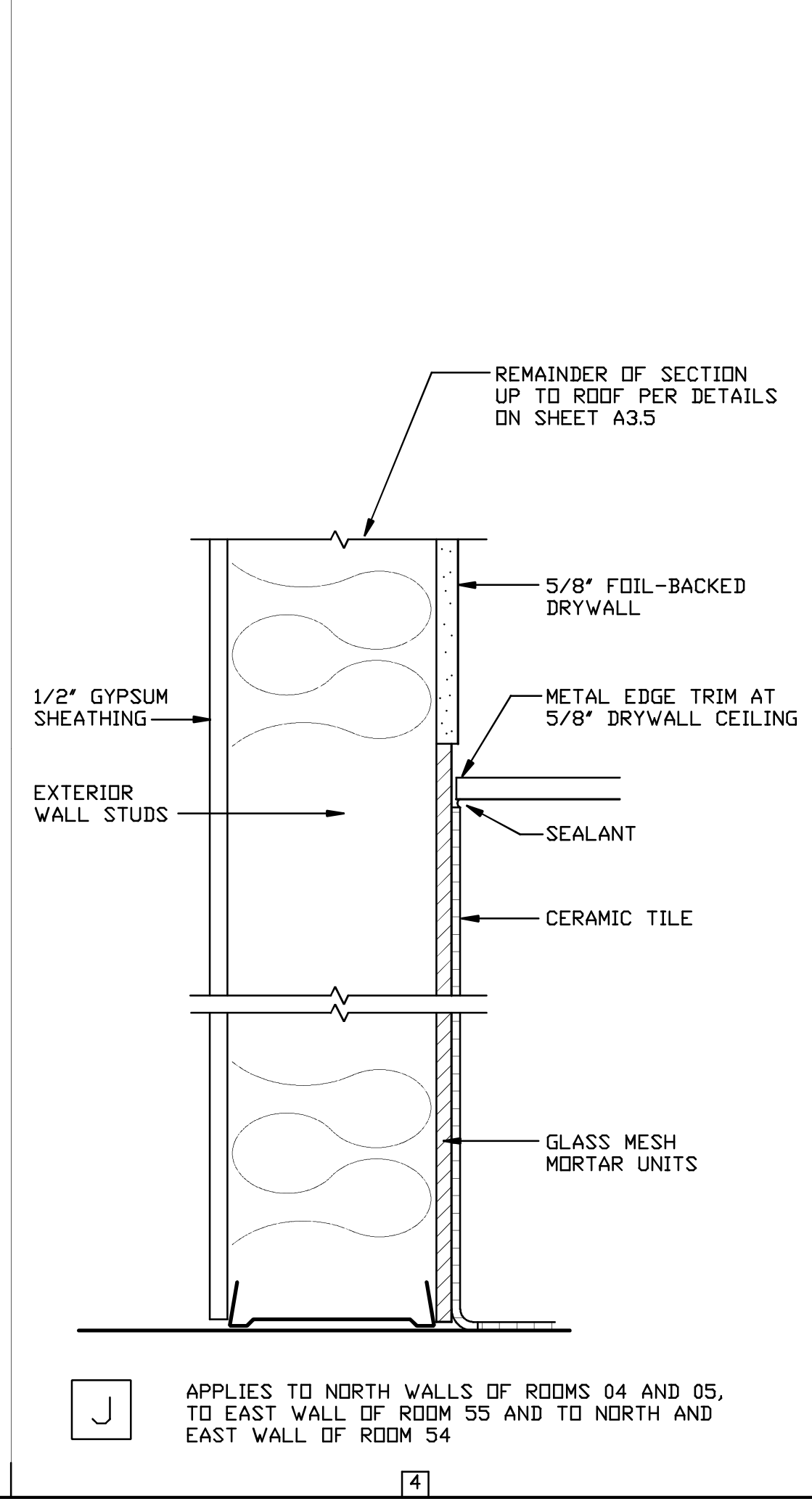
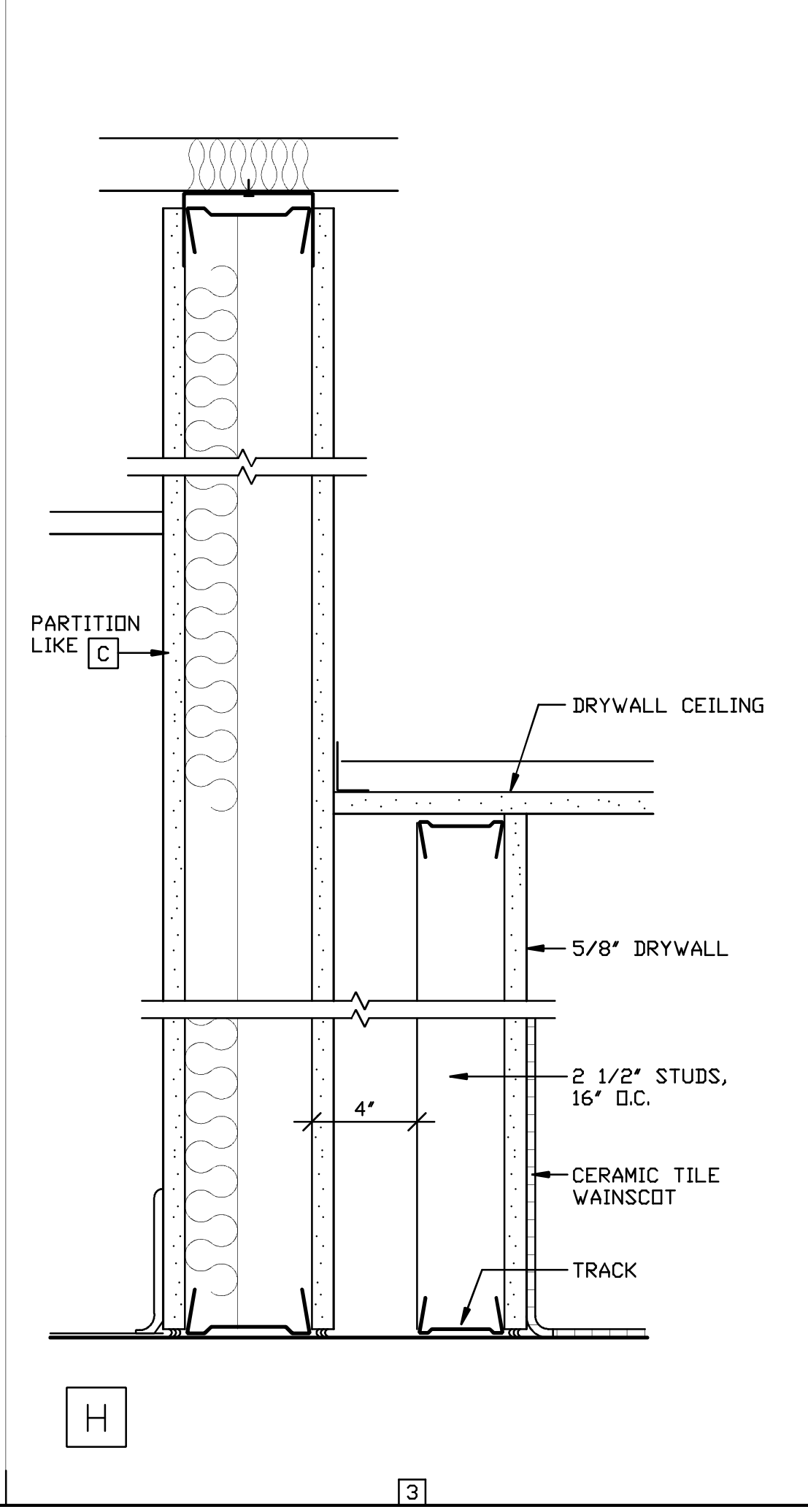
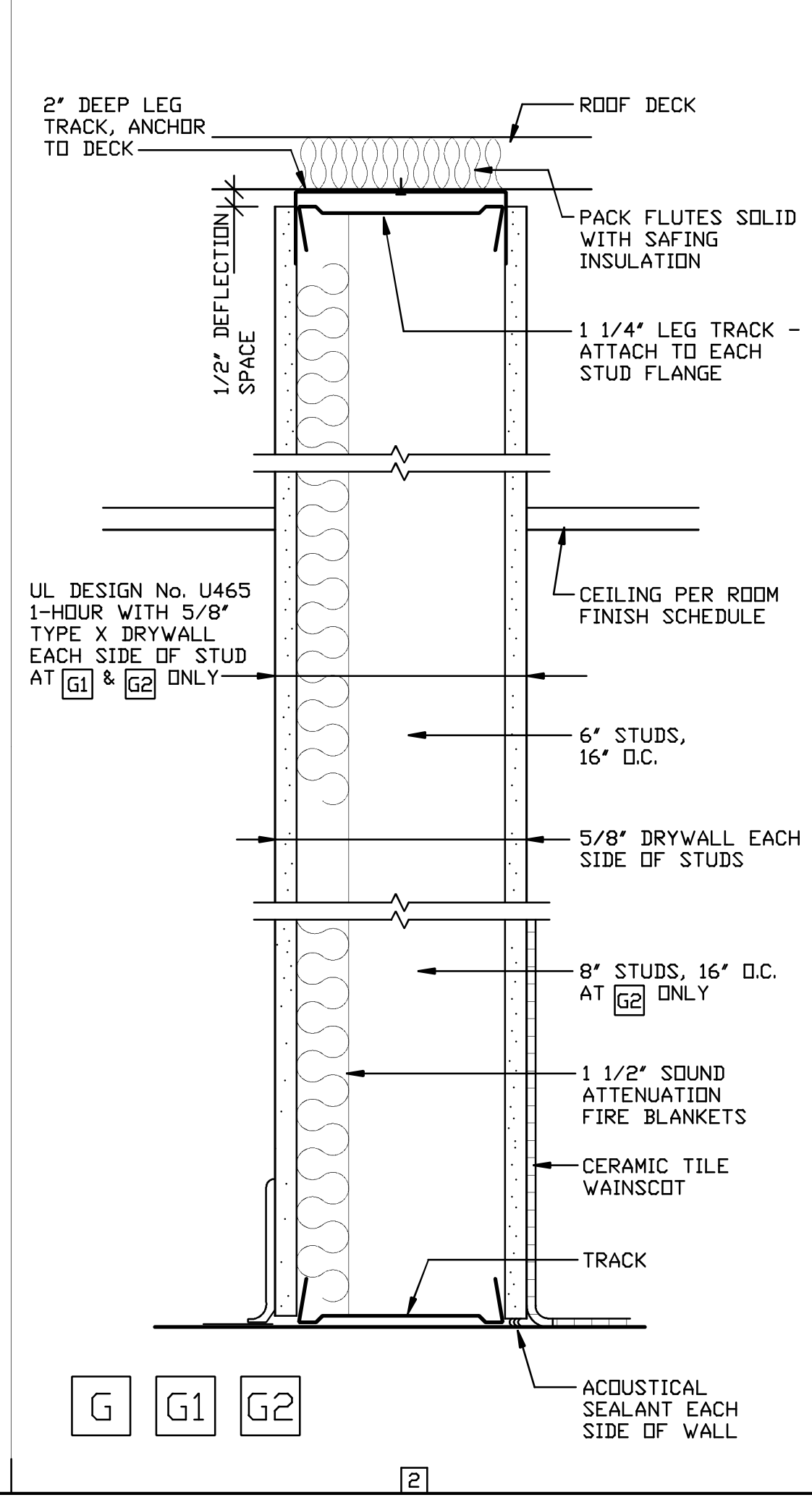
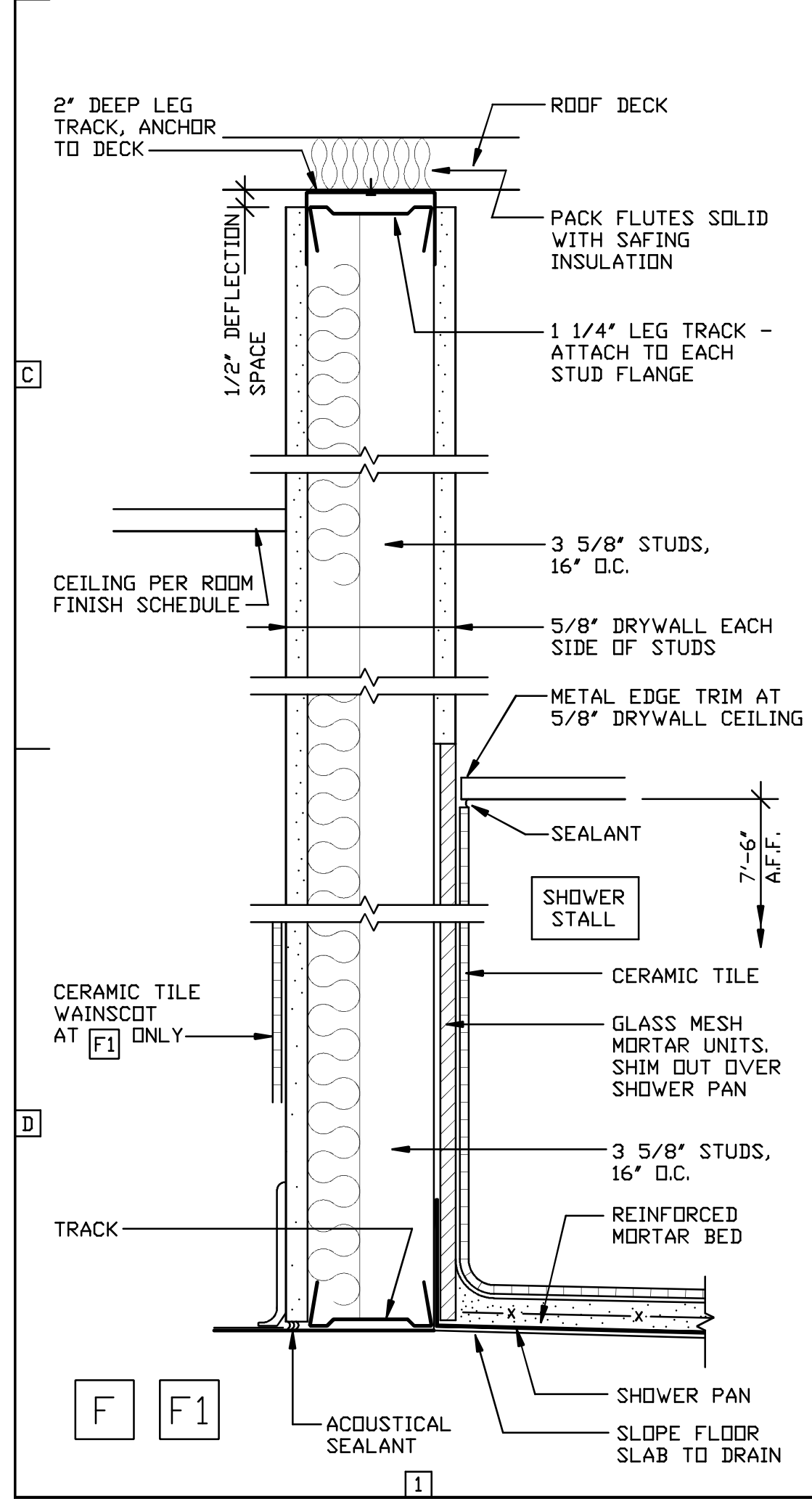
SAFING INSULATION

STEEL JOIST

5/8" DRYWALL ON HAT-SHAPED FURRING CHANNELS

ACoustICAL SEALANT

DRYWALL PARTITION



APPLIES TO NORTH WALLS OF ROOMS 04 AND 05, TO EAST WALL OF ROOM 55 AND TO NORTH AND EAST WALL OF ROOM 54