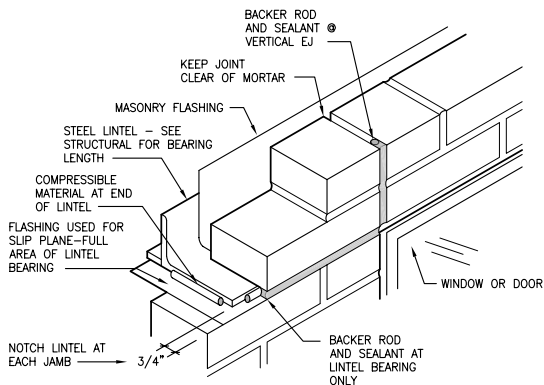


NOTE: AT MULTIPLE ANGLE LINTELS,
NOTCH EXTERIOR ANGLE ONLY.
TYPICAL DETAIL FOR ALL EXTERIOR LINTELS
TO BE SUPPLIED BY MASON.

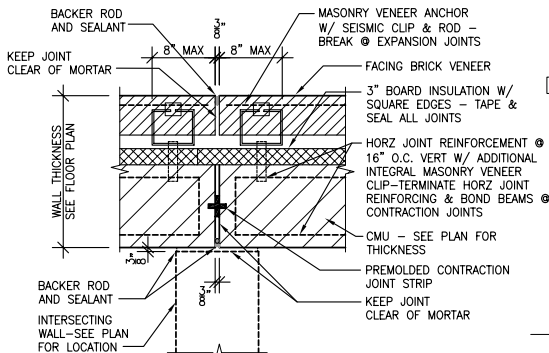


A4 TYP ANGLE LINTEL DETAIL
A4.A1 NTS

A5 TYP EJ AT JAMB
A4.A1 NTS

BRICK VENEER EXPANSION JOINT

SEE ELEVATION FOR LOCATION



CMU CONTRACTION JOINT

SEE STRUCTURAL FOR LOCATION

C5 TYP BRICK EJ/CMU CJ
A4.A1 1 1/2" = 1'-0"

LOOSE ANGLE LINTELS

SPAN	ANGLE/4" WALL THICKNESS
Up to 4'	3 1/2" x 3 1/2" x 1/4"
4' to 5'	4" x 3 1/2" x 5/16"
5' to 6'	5" x 3 1/2" x 5/16"
6' to 7'	6" x 3 1/2" x 3/8"
7' to 8'	7" x 4" x 3/8"
Over 8'	Custom

NOTES:

PROVIDE ONE ANGLE PER EACH 4" OF WALL THICKNESS.

PROVIDE LOOSE LINTELS FOR DUCT OPENINGS (05500).

MASON TO INSTALL LINTELS AT DUCT OPENINGS (04810).

SEE HVAC DRAWINGS FOR LOCATIONS OF DUCT OPENINGS AND LENGTHS REQUIRED.

PROVIDE 8" BEARING EACH END.

GRIND HORIZONTAL LEG TO 5/16" THICK FOR LENGTH OF BEARING ON 3/8" AND 1/2" ANGLES.

ALL ANGLES IN EXT WALLS ARE HOT DIPPED GALVANIZED.