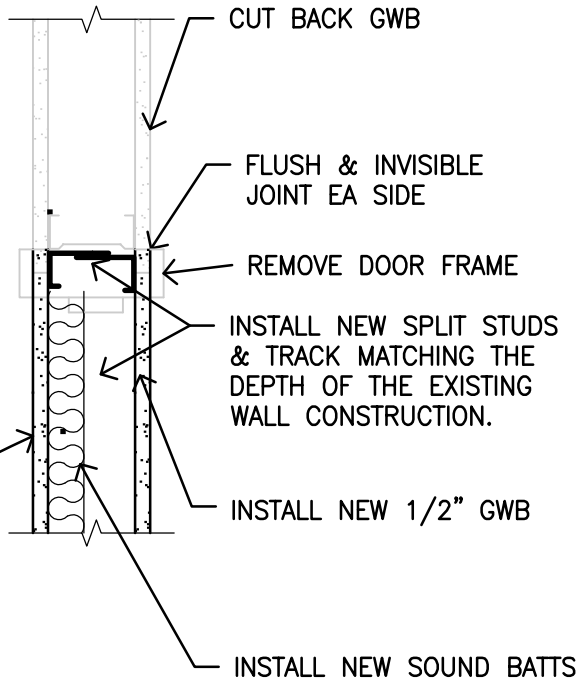


REMOVE RESILIENT BASE TO A JOINT. INSTALL NEW BASE TO MATCH.

REPAINT WALL ON EACH SIDE TO NEAREST CORNER OR TO FULL HEIGHT CHANGE IN MATERIAL (NOT DOOR FRAME).

EX WALLS HAVE 3" STUDS



H
601

INFILL DETAIL

1-1/2" = 1'-0"